

First Presbyterian Church

25 West Main Street | North East, PA 16428
(814) 725-8641 | FPCNE.ORG | Follow us on Facebook



CHURCH NEWS AND ANNOUNCEMENTS FOR SUMMER 2024

WEEKLY SERVICES AND OTHER NEWS TO KNOW

JOIN US FOR WORSHIP EACH SUNDAY AT 10:00 AM (ET). Services are offered in-person and online via Facebook LIVE. If you are able, come on out for worship and fellowship with your church family! The bulletin and announcements are posted at FPCNE.ORG.

WEDNESDAY EVENING PRAYER AND DEVOTION IS HELD EACH WEDNESDAY AT 7:00 PM (ET) ON FACEBOOK. Spend a few minutes with Pastor Gregg for a mid-week time of prayer and devotion.

GIVE VIA PAYPAL ON THE CHURCH WEBSITE. Go to FPCNE.ORG and click on the PayPal link. Easy!



TAKE ME OUT TO THE BALLGAME

Come out and join us at the Erie Seawolves ballgame on Sunday, June 30 at 1:35 PM. Tickets are \$10, and the deadline to sign-up is June 23. Ticket money can be given to Dianne Tyler or Steve and Beth Seymour.

WE'RE DOING MATTHEW 25!

For I was hungry and you gave me something to eat, I was thirsty and you gave me something to drink. As part of our commitment to living Matthew 25, during the month of June, we are collecting money and donations to help provide bottled water to children this summer through Community Shelter Services. Bring in cases of water. Drop a donation in the water pitcher in the Assembly Room. Or send your donations to the church.

NURSERY VOLUNTEERS NEEDED. Sign up in the Assembly Room to volunteer in the nursery to support our young families.

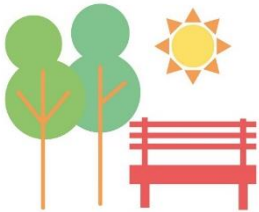




Sundaes on Sunday

Join Pastor Gregg and Jane at their home at 20 Gibson Street after worship on July 28 for “Sundae Sunday” coffee hour. Walk on over right after worship and enjoy some fellowship and tasty treats! After all, July is National Ice Cream Month, so you have to eat Sundaes on Sunday!

IF YOU HAVE A PRAYER REQUEST, JOY, OR CONCERN TO SHARE, please speak with Pastor Gregg or call or text his cell phone at (814) 460-3123. You can also email our prayer chain at jlivingston@neo.rr.com or text Jane Livingston at (814) 504-1135.



DURING THE MONTH OF AUGUST AND ON SEPTEMBER 1, WE WILL WORSHIP IN GIBSON PARK AT 10:00 AM WITH OUR FRIENDS FROM PARK UNITED METHODIST CHURCH.

Please bring a lawn chair or blanket for seating. In the event of rain, the host church will hold the service indoors. FPCNE will host on August 4, 11, and September 1. Park will host on August 18 and 25. We’ll be back indoors at FPCNE on September 8 at 10:30 AM.

ERIE GIVES DAY: AUGUST 13, 8:00 AM TO 8:00 PM

Visit ERIEGIVES.ORG on August 13, search the website for **First Presbyterian Church of North East**, and maximize your giving dollars. The Erie Community Foundation and the North East Community Foundation will match a percentage of each donation given to FPCNE. Let’s support our church with another year of generous donations!



INTERESTED IN BECOMING A MEMBER OF FPCNE? Speak with Pastor Gregg. He’d love to talk with you.

OFFERING OUR TENTH & GIFTS BEYOND

1. Place your envelopes in the plates at the back of the sanctuary.
2. Mail your financial support to 25 West Main Street, North East PA 16428.
3. Contact the Pastor Gregg, and he will connect you with Dave Poor, our church treasurer, to set up direct deposit.
4. Give through PayPal at paypal.me/fpcne. Or scan the QR code with your phone camera to go right to the church’s Paypal account.



CONTACT INFO YOU MIGHT NEED

- Contact Pastor Gregg anytime at (814) 460-3123 (call or text) and pastortownsend@yahoo.com.
- Contact music director Jane Livingston at (814) 504-1135 (call or text) and jlivingston@neo.rr.com.